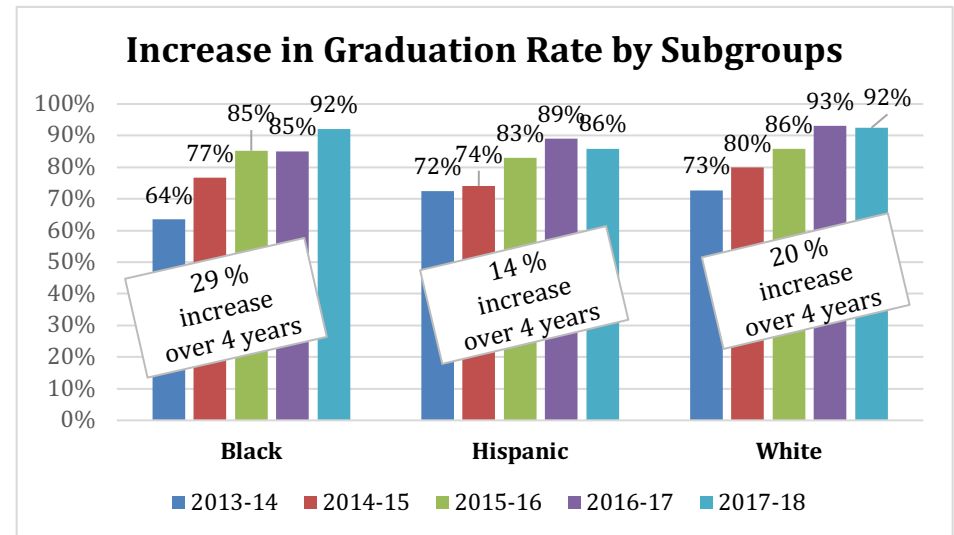
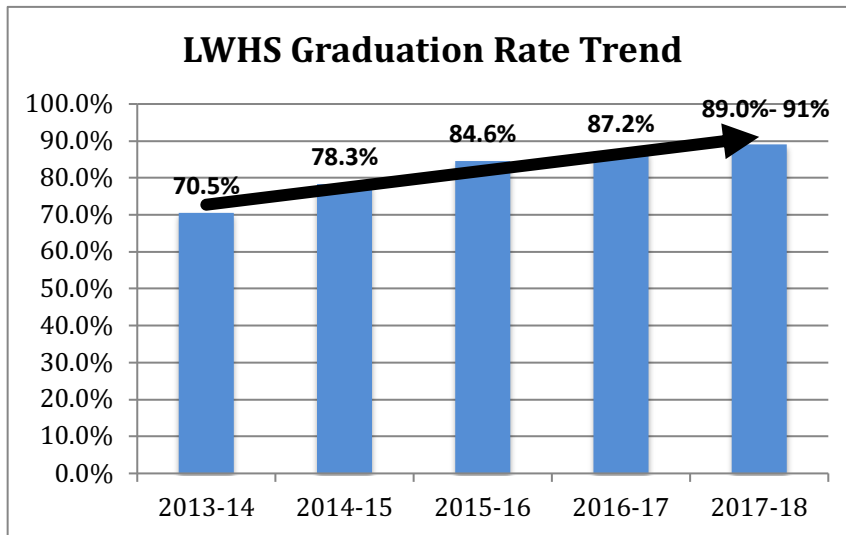




BOARD RETREAT UPDATE JUNE 2018

The graduation has consistently been on the rise since 2013-14 and we are predicting that the 2017-18 graduation rate will be in the 89-91% range.



WHY A HIGH SCHOOL DIPLOMA MATTERS

The US National Graduation Rate is 84.1% (2016). According to data from the Alliance for Excellent Education’s “Graduation Effect” economic model, reaching a 90 percent graduation rate for just one cohort of students would mean the country would see a \$3.1 billion increase in annual earnings, create more than 14,000 new jobs, and save \$16.1 billion in health care costs. We are happy to be part of this movement.

Source: <http://www.americaspromise.org/high-school-graduation-facts-ending-dropout-crisis>



FSA ELA AND EOC SCORES FOR 2017-18

Summary:

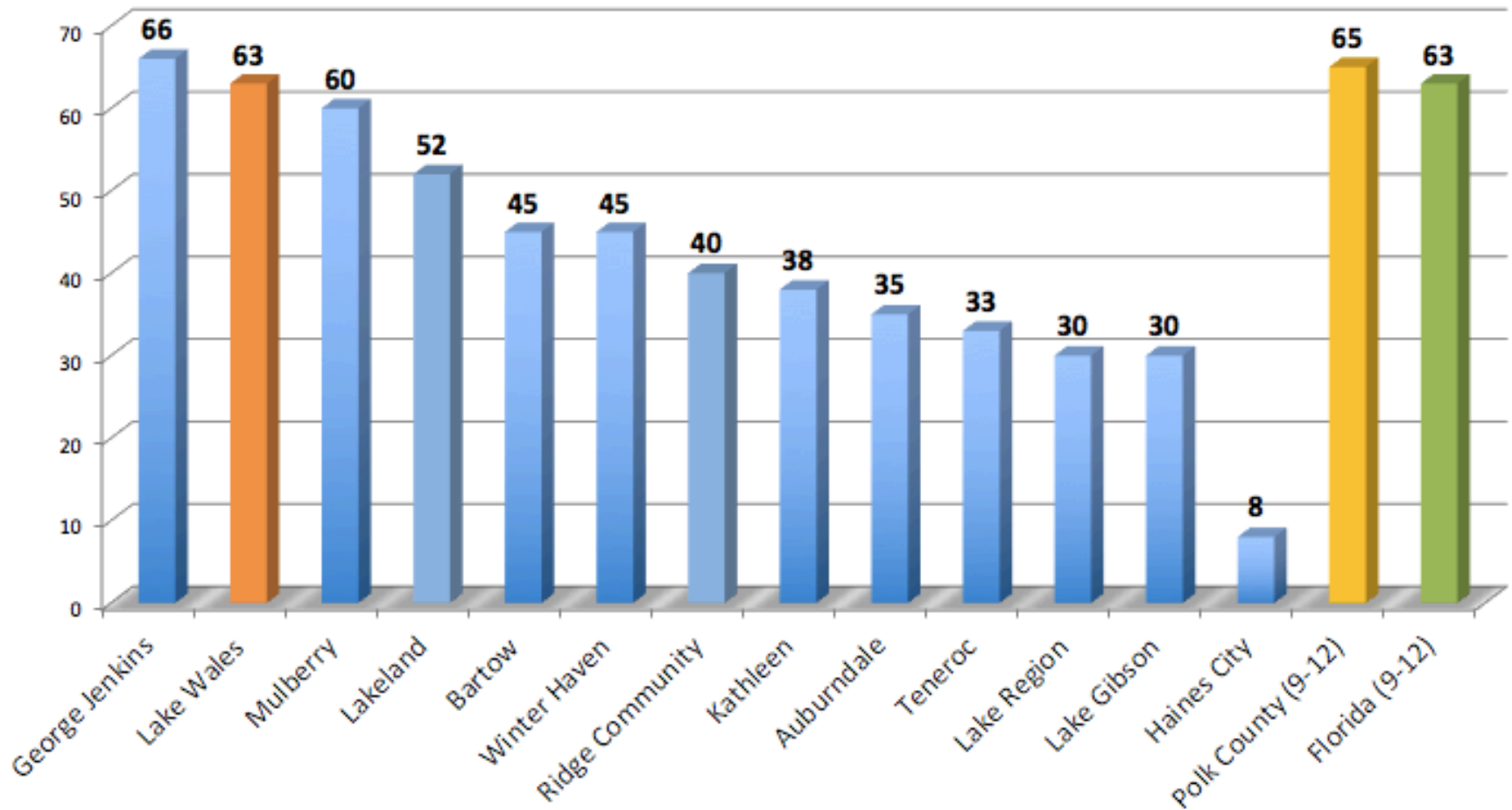
- Algebra 1 Scores increased from 43% to 51% to 63% (a 12% gain over last year and a 20% gain over two years)
- Geometry scores increased from 30% to 39% to 49% (a 10% gain over last year and a 19% gain over two years)
- US History scores increased from 52% to 60% to 62% (a 2% gain over last year and a 10% gain over two years)
- ELA 9th grade scores increased from 50% to 51% to 56% (a 5% gain over last year and a 6% gain over two years)
- ELA 10th grade scores increased from 44% to 48% to 52% (a 4% gain over last year and a 8% gain over two years)
- Biology scores went from 60% to 65% to 59% (a 6% decline over last year and a 1% decline over two years)

All comparisons are amongst the 13 high schools serving grades 9-12 in Polk County, the county average and the state average.

Free and Reduced Lunch Percentages			
School	FRLP 2017-18	School	FRLP 2017-18
Teneroc	85	Winter Haven	66
Kathleen	76	Auburndale	63
Haines City	75	Bartow	58
Lake Region	73	Lake Gibson	57
Mulberry	69	Lakeland	56
Lake Wales	68	George Jenkins	39
Ridge Community	67		

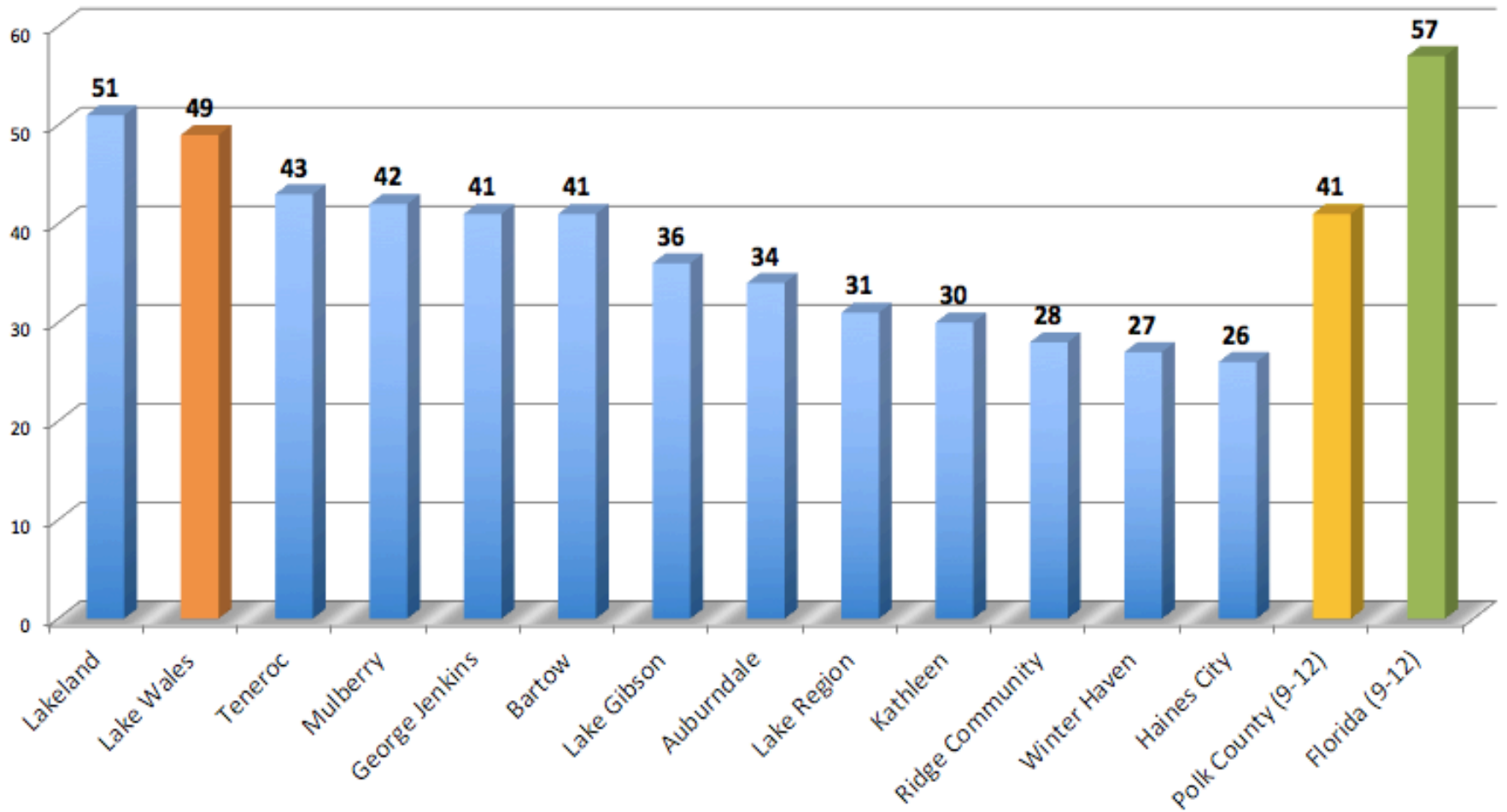


Algebra 1 EOC 2017-18 % Proficient (#2 in County)



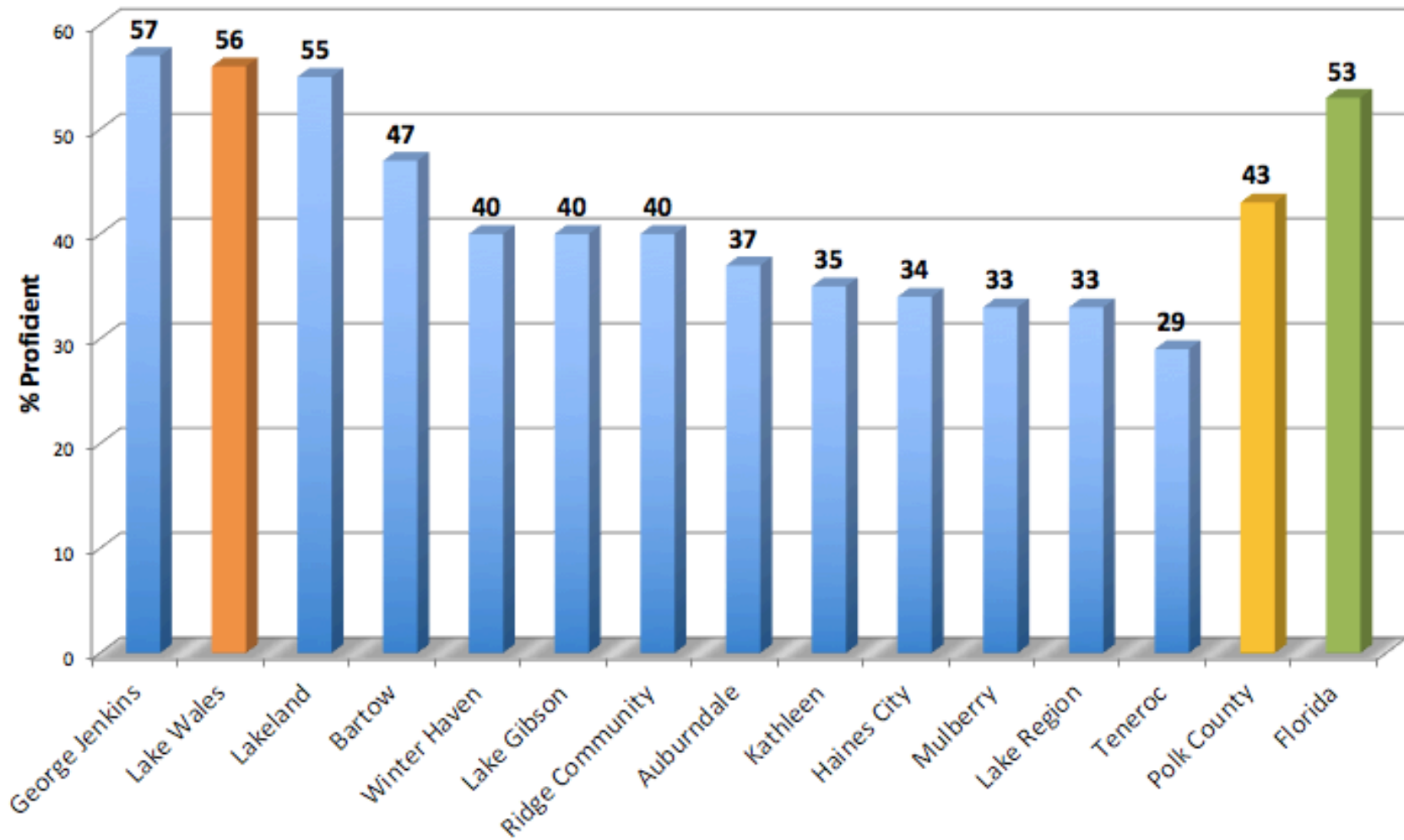


Geometry EOC 2017-18 % Proficient (#2 in County)



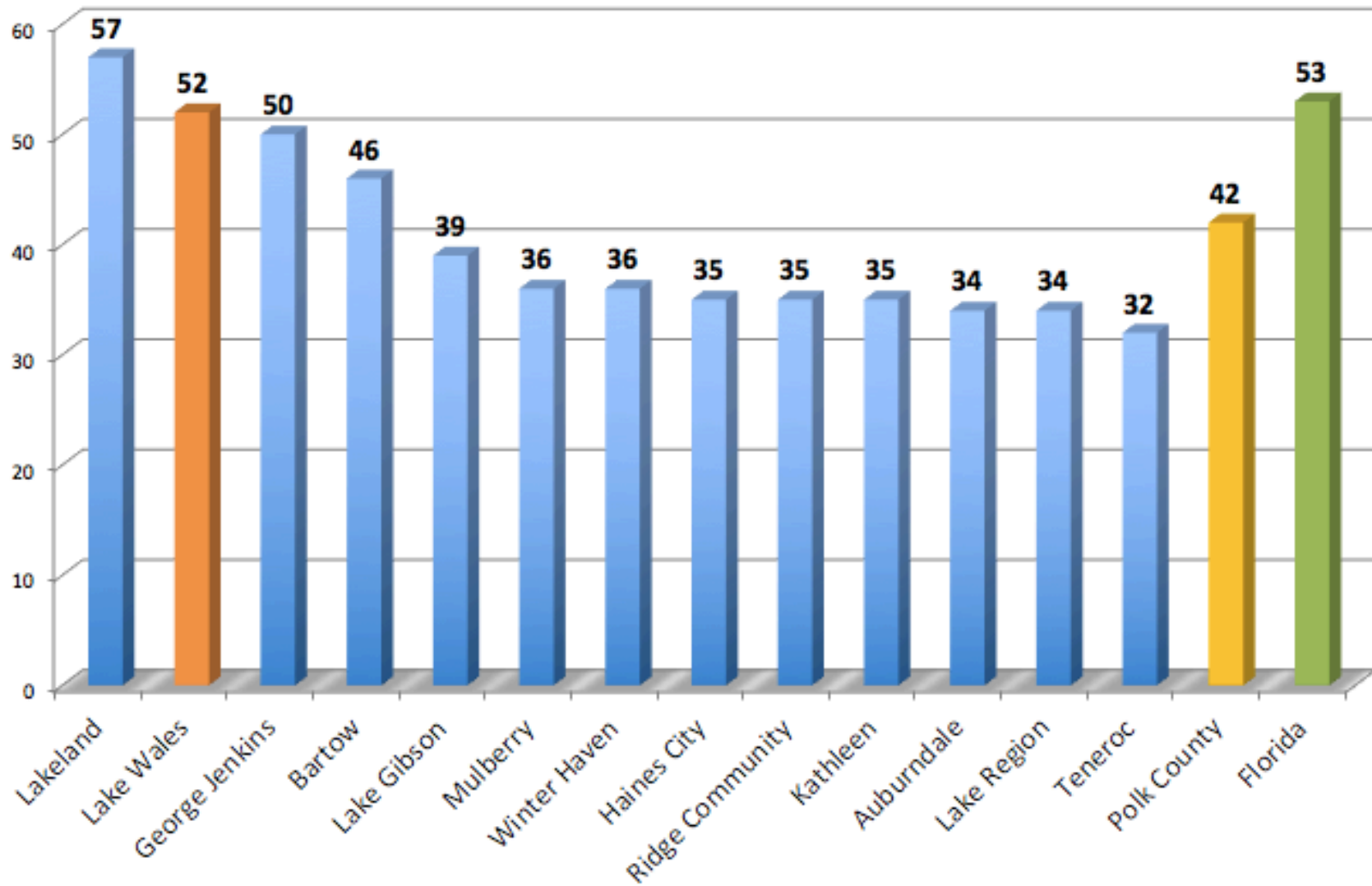


ELA 9th Grade 2017-18 % Proficient (#2 in County)



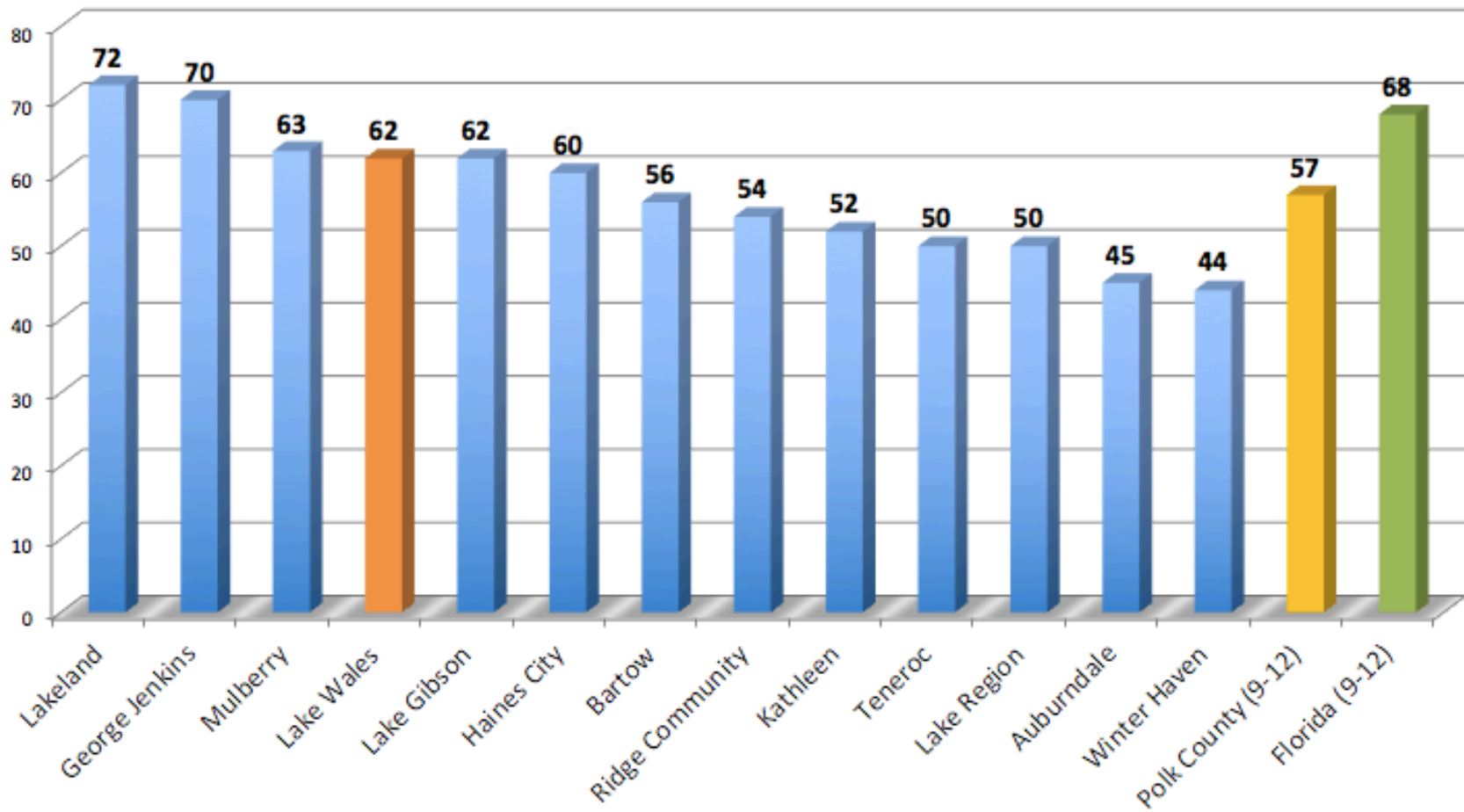


ELA 10th Grade 2017-18 % Proficient (#2 in County)





US History EOC 2017-18 % Proficient (#4 in County)





Biology EOC 2017-18 % Proficient (#7 in County)

